

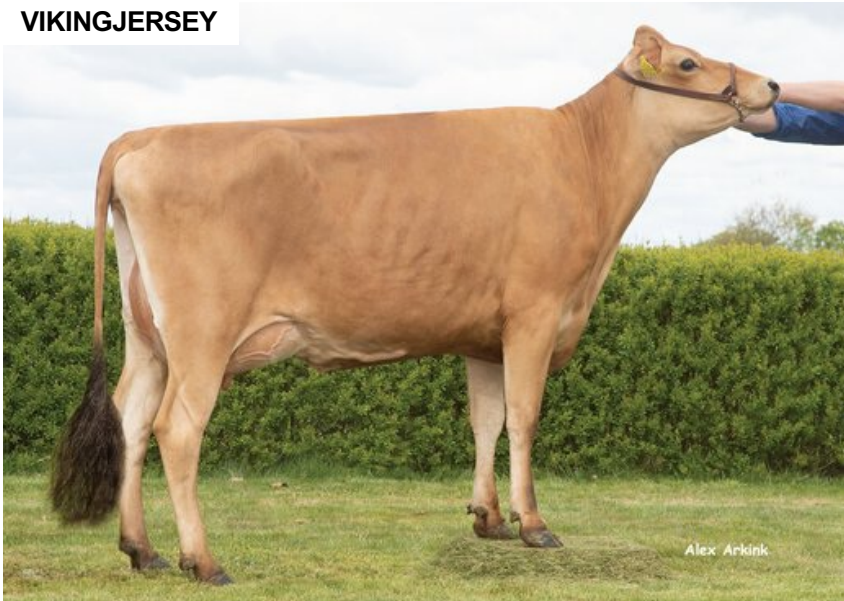
VJ Gislev

DNK 304171

Beta casein: A2A2 Kappa casein: BB aAa: 516342
 DOB.: 01/02/2015 VJ Hihl x VJ Lure x Q Zik
 Proven Polled: POF



VIKINGJERSEY



NTM 5

RECOMMENDED FOR

- MILK

Daughter of VJ Gislev

Dam average (305 days) 9311 kg 6.2 % F / 578 kgF 4.49 % P / 418 kgP
Est. dtr. average (305 days) 8006 kg 5.86 % F / 469 kgF 4.31 % P / 344 kgP

NTM November 2024

PRODUCTION & EFFICIENCY NO. OF DTRS 1710 REL 99%

		90	100	110	120
Production	113				
Milk kg	111				
Protein kg	114				
Protein %	98				
Fat, kg	111				
Fat, %	95				
Growth	96				
Saved feed	93				
Persistency	101				

FUNCTIONAL NO. OF DTRS 1097 REL 98%

		90	100	110	120
Daughter fertility	96				
Calving sire	94				
Calving maternal	107				
Udder health	103				
General health	90				
Longevity	104				
Hoof health	64				
Youngstock survival	86				
Milkability	106				
Temperament	125				

OVERALL CONFORMATION NO. OF DTRS 871 REL 95%

		90	100	110	120
Frame	95				
Feet & legs	95				
Udder	99				

CONFORMATION

		80	90	100	110	120
Stature	Short					Tall 110
Rib structure	Coarse					Angular 107
Chest width	Narrow					Wide 100
Body depth	Shallow					Deep 106
Rump width	Narrow pins					Wide pins 112
Rump angle	High pins					Low pins 109
Top line	Weak					Strong 98
Rear legs, side view	Straight					Sickled 93
Rear legs, rear view	Toes out					Parallel 86
Foot angle	Low					Steep 104
Bone quality	Coarse					Fine and thin 97
Hock quality	Filled					Dry 93
Fore udder attachme...	Loose					Strong 97
Rear udder height	Low					High 102
Rear udder width	Narrow					Wide 90
Udder support	Weak					Strong 101
Udder depth	Deep					High 104
Udder balance	Deep rear					Deep front 96
Teat length	Short					Long 88
Teat thickness	Thin					Thick 91
Teat placement (front)	Wide					Close 99
Teat placement (back)	Wide					Close 101